

# CALTAX ETS

## Emergency Towing System for Tankers



A Compact Box :

- Based on round-pulling principle
- No towing wire required on tanker
- Reliable
- Ready to use



Features :

- Full system integrated in single box
- Easy installation / minor strengthening required
- Easy inspection & Limited maintenance
- Limited deck space required and no interference deck operations
- Cost effective
- Wider towing applications , e.g. offshore, pontoons ...

Developed by IMC

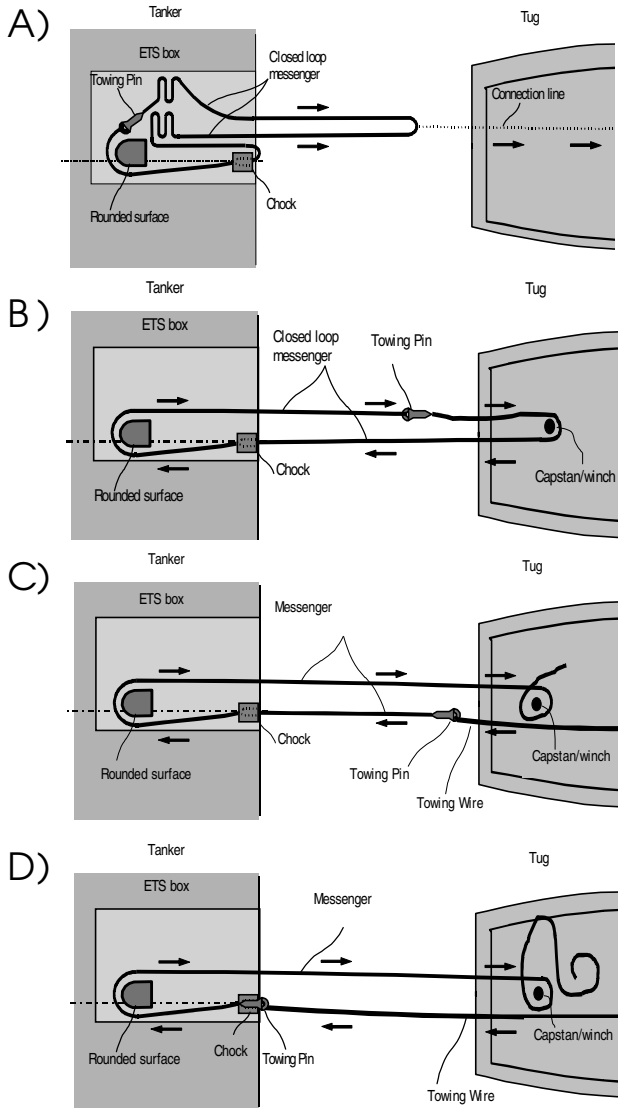
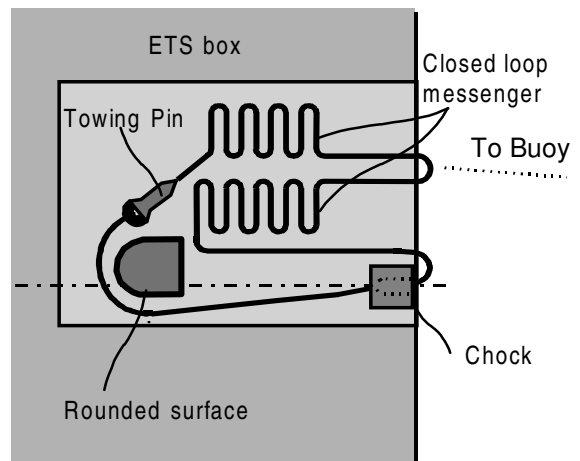


## Description of CALTAX ETS

On the aft deck of the tanker the following equipment is installed, see schematic view on the right

- A chock with integrated strongpoint
  - A towing pin
  - A double messenger forming a closed loop around a smooth rounded surface and running through the chock.
  - A pick-up arrangement of buoy and connection line
- All items are fitted in an enclosed rectangular box.

After release of the buoy and the connection line, the tug will locate the buoy and retrieve the attached connection line.



## Functioning

### A) Pulling closed loop messenger to tug

The tug pulls the connection line, and the closed loop messenger line is released from the storage and transferred to the tug.

### B) Round-pulling towing pin to tug

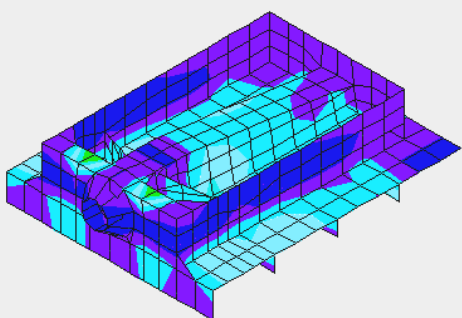
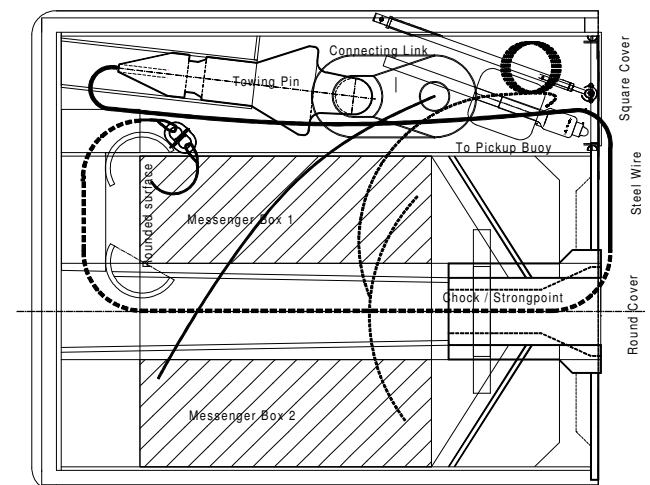
After arrival of the closed loop messenger on the tug, the connection line is released and round-pulling starts until the towing pin arrives on the tug.

### C) Connecting towing wire and back to tanker

After arrival of the towing pin on the tug, the heavy towing wire is connected and the closed loop messenger released. Next starting round-pulling the towing pin and the towing wire from the tug to the tanker.

### D) Round-pulling towing pin to fairlead on tanker

The messenger automatically pulls the towing pin into the fairlead and establishes a rigid towing connection.



For more info

**Mr. G.C. Traas**  
**CALTAX ETS**

Glacisstraat 165  
P.O. BOX 5052  
4380 KB Vlissingen  
The Netherlands

# CALTAX ETS

Tel: + 31 -(0) 118 - 48 20 05

Fax: + 31 -(0) 118 - 48 20 55

E-mail: [info@technometal.nl](mailto:info@technometal.nl)

Web site: [www.technometal.nl](http://www.technometal.nl)